

CERTIFICATE OF LOCATION OF GOVERNMENT CORNER

County of Anoka

State of Minnesota

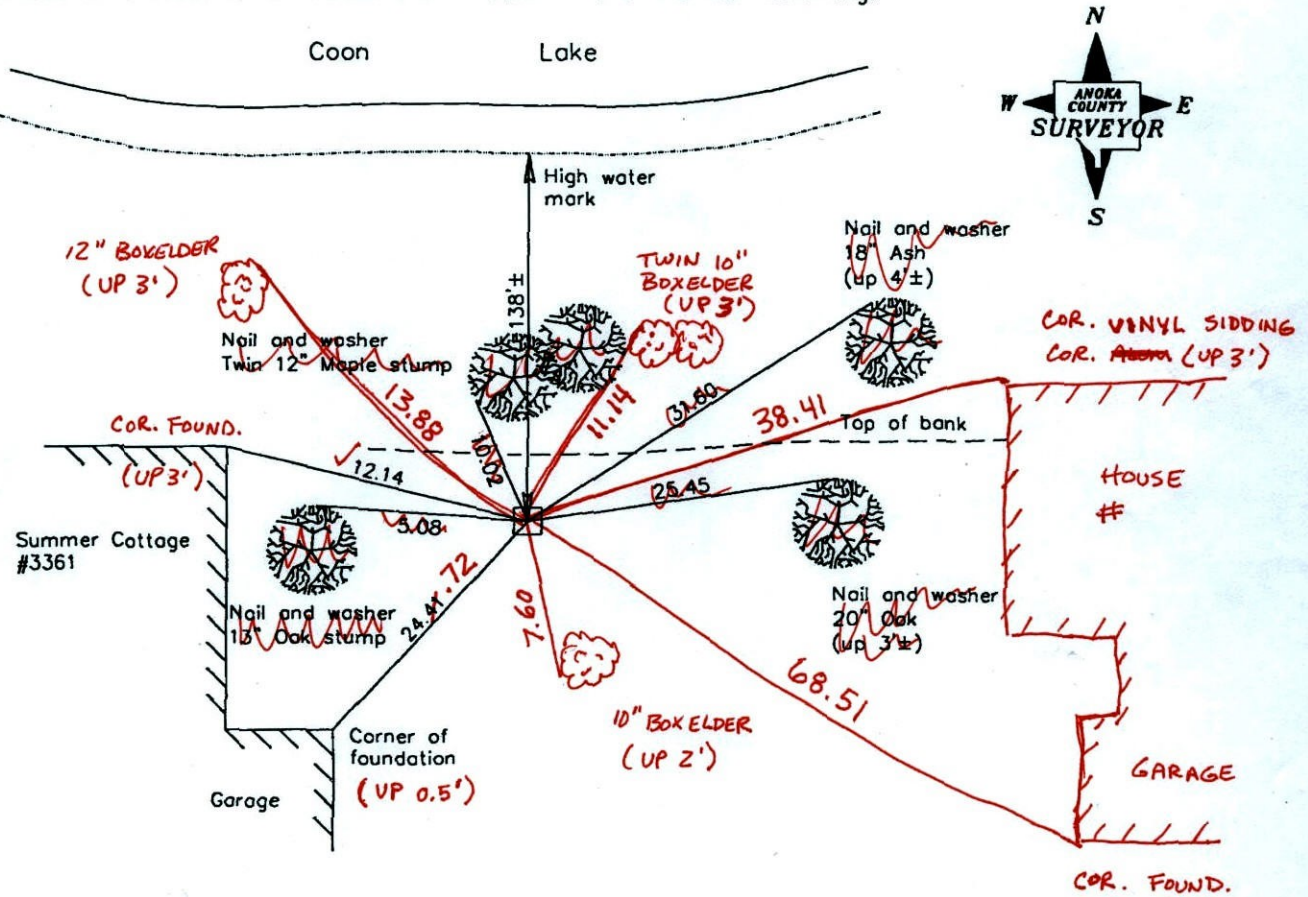
Meander Corner of Sec. 3 Township 32 Range 23
(On east line of section)

I hereby certify that on the 8th day of July, 1964, I found the described corner which was evidenced by a concrete monument

and I further certify that to perpetuate the location of said corner, I did, at the exact location thereof, place a permanent marker consisting of a concrete monument (up 0.5'±) ✓

(BANK/GROUND ERODING AWAY ON N. SIDE OF MON.)

which reference or witness monuments are located in the manner following:



*BK-55
T/T*

Revised date

11/07/90
10/18/91
8/01/96
1/03/02
<i>4-6-11</i>

N.A.D. 1983 Coordinates
(1996 adjustment)

County Project Coordinates		State Plane Coordinates	
Northing	192561.8900	Y	_____
Easting	521325.5158	X	_____

Date 1/03/02

CERTIFICATE OF LOCATION OF GOVERNMENT CORNER

County of Anoka

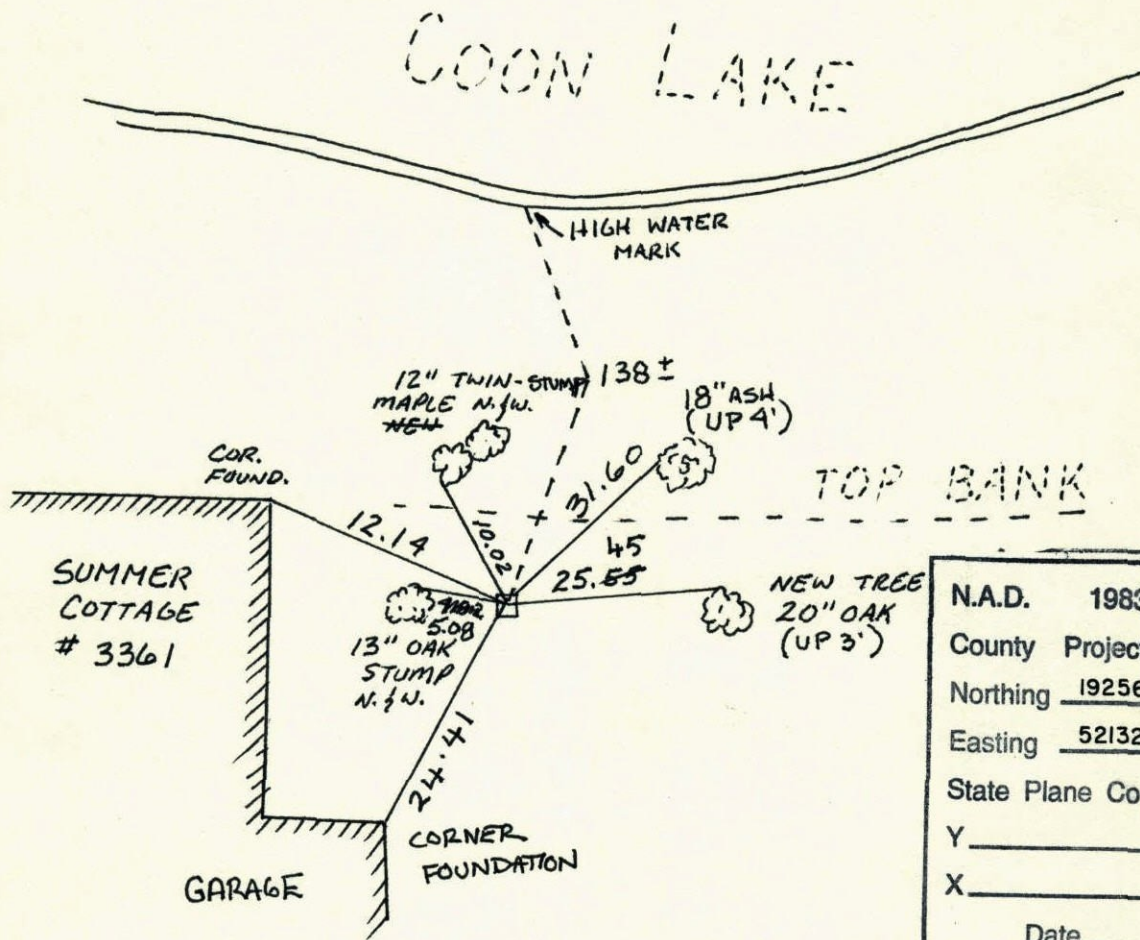
State of Minnesota

MEANDER EAST 3 Township 32 Range 23
 LINE Corner of Sec.

I hereby certify that on the 8 day of JULY, 1964, I found the described corner which was evidenced by CONCRETE

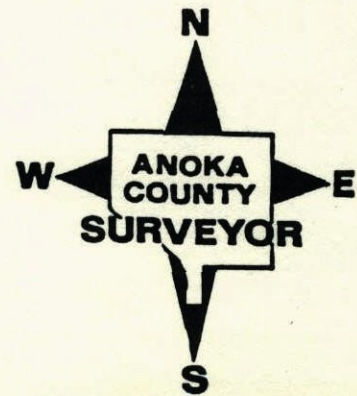
and I further certify that to perpetuate the location of said corner, I did, at the exact location thereof, place a permanent marker consisting of CONCRETE MON.
UP .5' ±

which reference or witness monuments are located in the manner following:



N.A.D.	1983	Co-ordinates
County	Project	Co-ordinates
Northing		192561.8900
Easting		521325.5158
State Plane Co-ordinates		
Y _____		
X _____		
Date _____		

Revised date	Revised date	Revised date
11-7-90		
10-18-91		
8-1-96		
1-3-02		

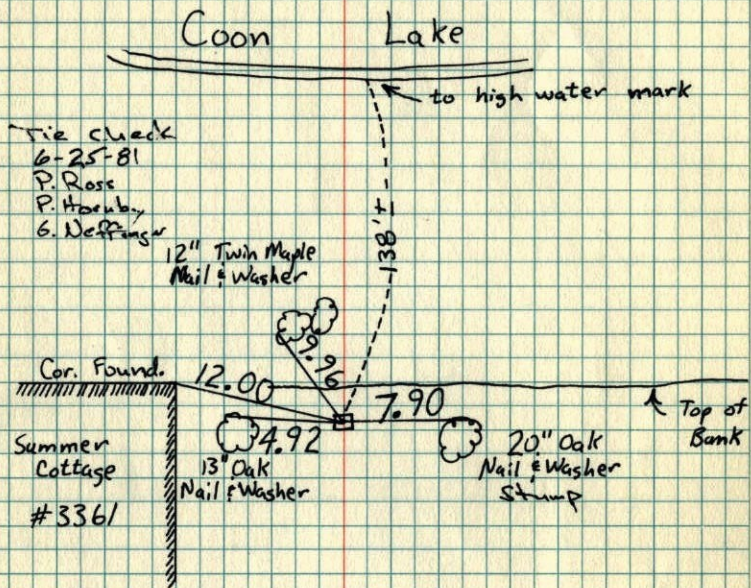


M. C. East Line Sec. 3, T32, R23

18

Concrete Monument up 0.6'±

July 8 1964
M. D. Anderson
R. M. Carlson



Tie Check
June 5, 1975
D. Dahl
B. Sannerud
G. Adams

TIE CHECK
July 12, 1984
D. Ross
G. Lips
R. Bennett

Tie Check
June 6, 1978
D. Dahl
J. Stephens
M. Kistrup

○ Power Pole with X
painted to mark
which cottage

TEMPERATURE CORRECTED
AND HORIZONTALLY
TAPED MEASUREMENTS

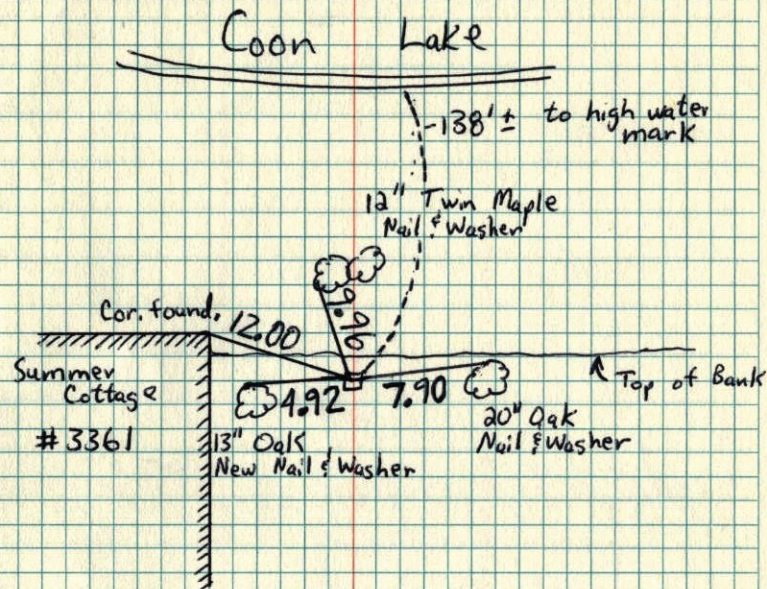
ROLAND W. ANDERSON
COUNTY SURVEYOR
ANOKA COUNTY, MINNESOTA

M. C. East line Sec. 3, T32, R23

18

Concrete Monument up 0.6'±

July 8 1964
M. D. Anderson
R. M. Carlson



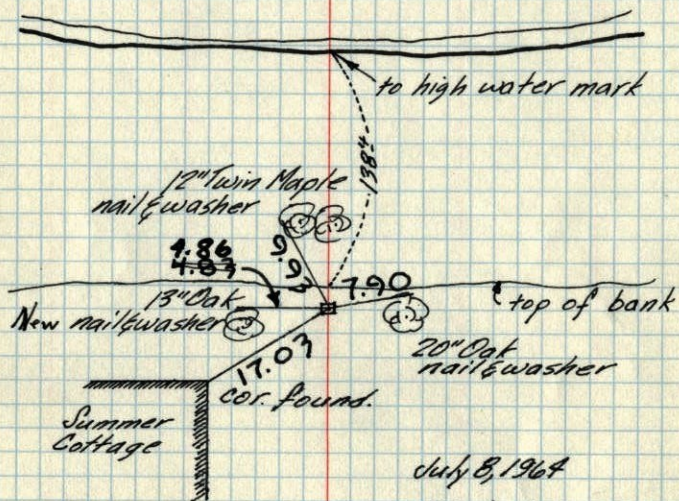
Tie Check
6/5/75
D. Dahl
B. Sannerud
G. Adams

○ Power Pole
with X painted to
mark which cottage

M.C. East line Sec. 3-T32-R23

Conc. Monument up 0.6'

COON LAKE



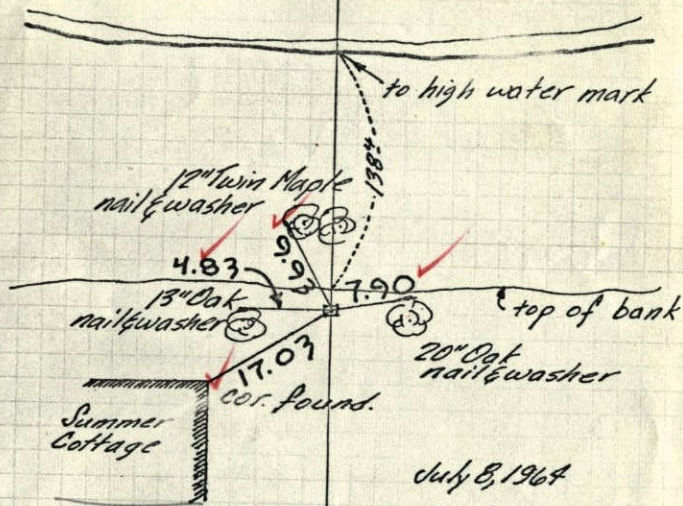
July 8, 1964

M.D. Anderson
R.M. CarlsonTie Check
July 19, 1966
B. Rogers
D. Powell
J. BerryTie Check
May 24, 1971
M. D. Anderson
R. Brien○ Power Pole with X
painted on it to mark
which cottageTEMPERATURE CORRECTED
AND HORIZONTALLY
TAPED MEASUREMENTSROLAND W. ANDERSON
COUNTY SURVEYOR
ANOKA COUNTY, MINNESOTA

M.C. East line Sec. 3-T32-R23

Conc. Monument up 0.6'

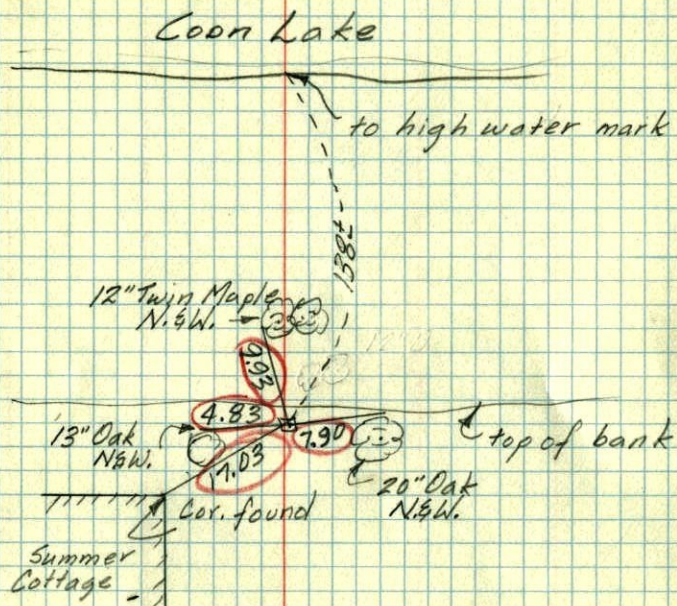
COON LAKE



July 8, 1964

M.D. Anderson
R.M. CarlsonP.P. ○
with X painted
on it to mark
which cottageties checked
7/19/66B. Rogers
D. Powell
J. BerryTape #5
Temp. 73°TEMPERATURE CORRECTED
AND HORIZONTALLY
TAPED MEASUREMENTSROLAND W. ANDERSON
COUNTY SURVEYOR
ANOKA COUNTY, MINNESOTA

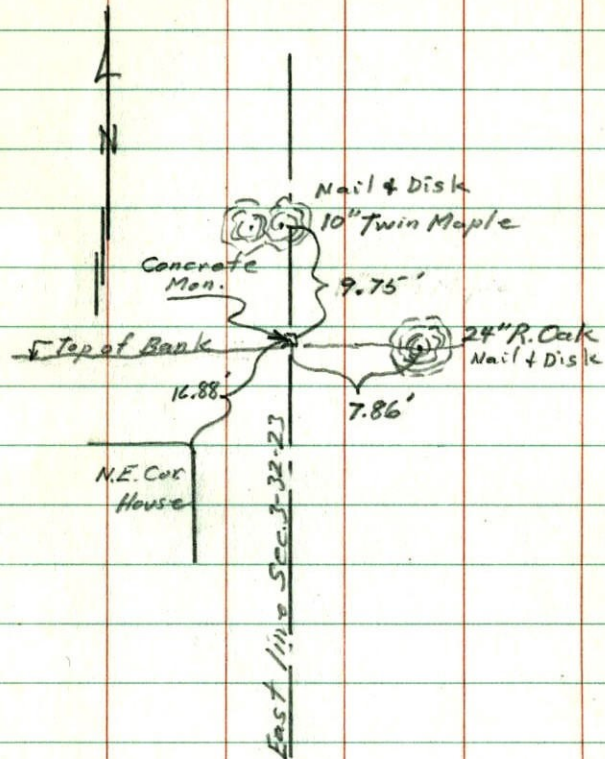
M.C. East line of Sec. 3-132-R23
 Conc. Mon. up 0.6'



July 8, 1964
 M. D. Anderson
 R. Carlson

Temp. 75°
 Tape #1

Meander Corner South Side
 of Coon Lake on the East
 line of the SE 1/4 of Sec. 3-32-23.



May 29, 1960

Robert M. Knudsen

MEANDER COR. SOUTH SIDE
OF COON LAKE ON THE EAST
LINE OF S.E. 1/4 OF SEC
3-32-23

N

